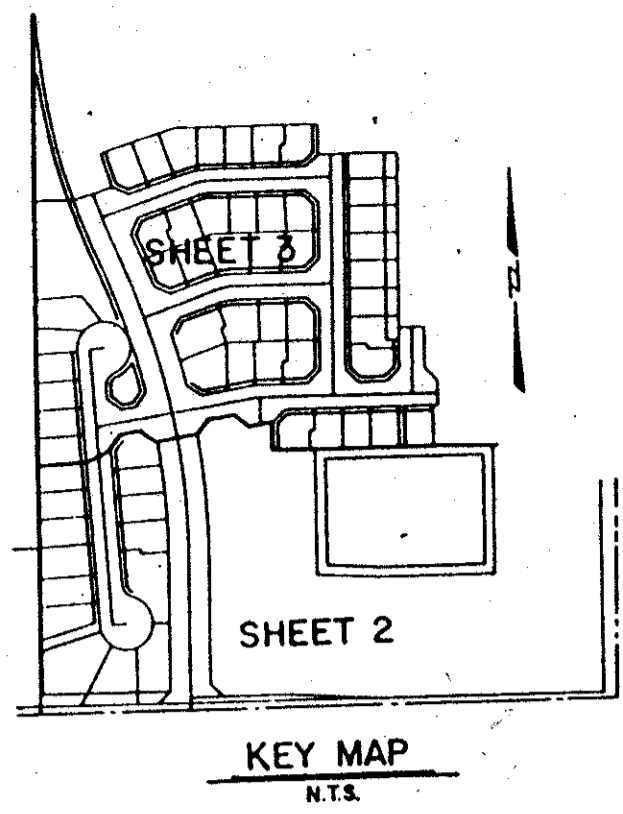


0605-001

111

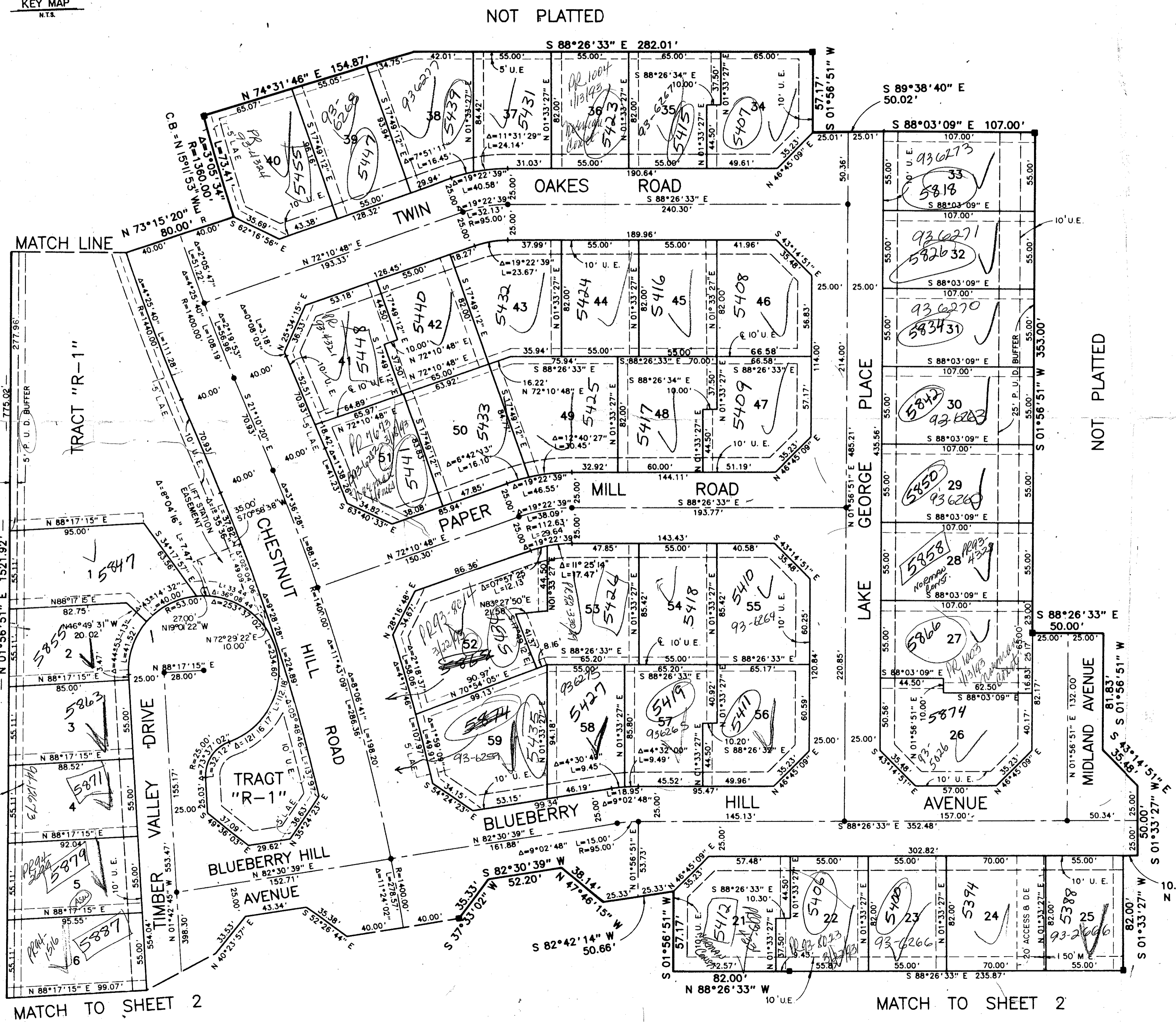
LEE ESTATES PLAT 1

A PLANNED UNIT DEVELOPMENT
 LYING IN SECTION 35, TOWNSHIP 44 SOUTH, RANGE 42 EAST,
 PALM BEACH COUNTY, FLORIDA
 SHEET 3 OF 3 JULY, 1992



STATE OF FLORIDA
 COUNTY OF PALM BEACH
 This Plat was filed for record at _____
 M. this _____ day of _____ 19____
 and duly recorded in Plat Book No. _____
 on Page _____
 Milton T. Bauer, Clerk of the Circuit Court
 By _____ D.C.

LANTANA HOMES PLAT 7
 (PLAT BOOK 58, PAGES 76 & 77)
 NOT PLATTED
 LANTANA HOMES PLAT 9
 (PLAT BOOK 58, PAGES 80 & 81)
 NOT PLATTED
 LANTANA HOMES PLAT 9
 (PLAT BOOK 58, PAGES 80 & 81)
 NOT PLATTED



SUBDIVISION # LEE ESTATES
 BOOK 6A FLOOD MAP # 175B
 ZONING RS/PUD
 QUAD # 33
 SE 90-16
 PLD NAME SCUMM
 TAZ = 349

IMPACT FEE
 PET. 90-16
 COLLECT

0605-001

Scale 1" = 40'
 6/9/11

Landmark Surveying & Mapping Inc.
 1850 FOREST HILL BOULEVARD
 PH. (407)433-5405 SUITE 100 W.P.B. FLORIDA

LEE ESTATES PLAT 1